

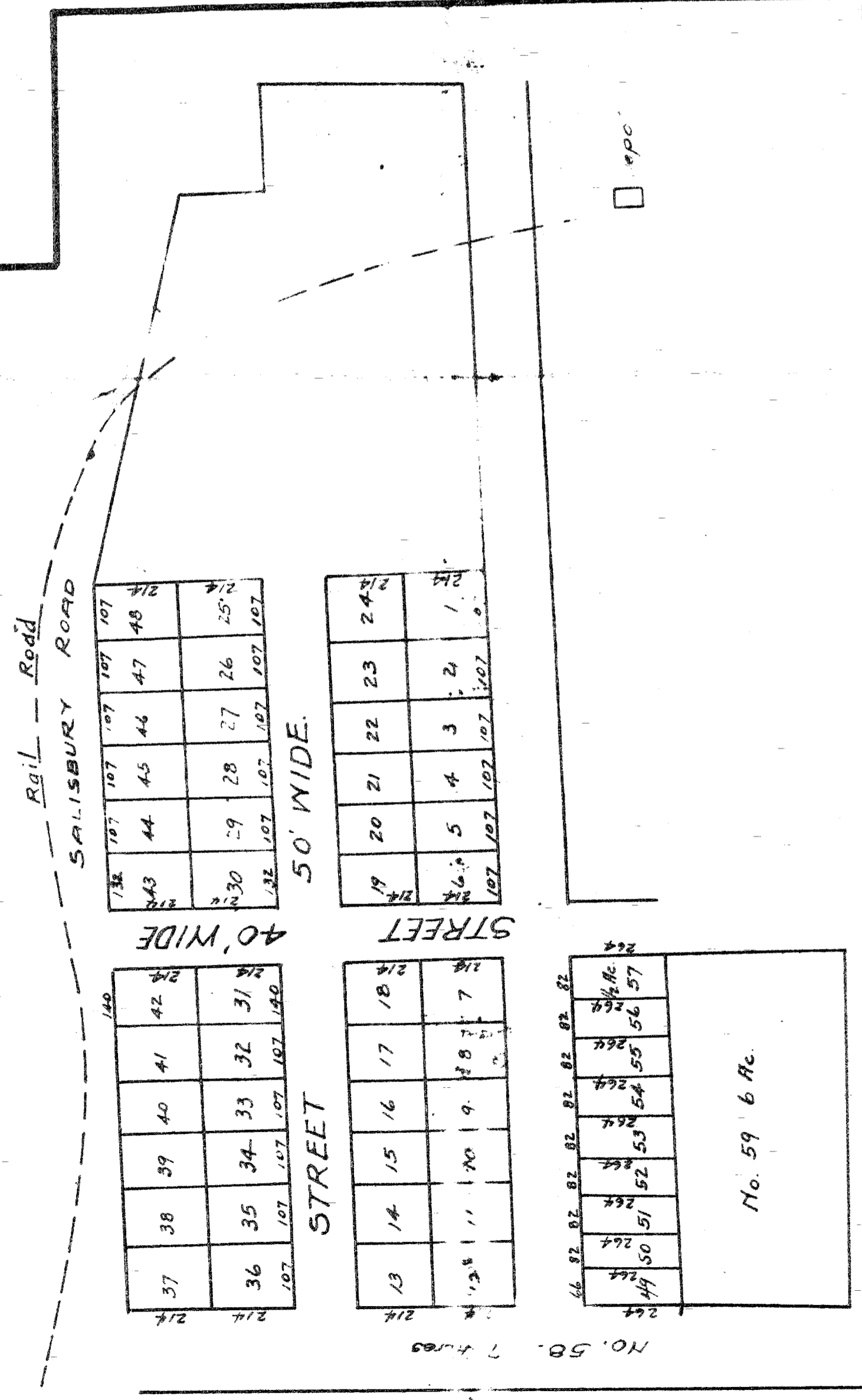
Plot Showing Condemnation through the land of Mrs C.A. Hoover
 RANDOLPH CO. N.C.

Note: Two parcels of land shaded RED are those to be condemned from the Hoover Estate
 No. 1 = 0.37 Acres.
 No. 2 = 2.09 Ac.

For description of Hoover Downy Lot
 See Book 115 Page 400

See Judgement Roll No. 5322
 in office of Clerk of Court
 Randolph County, N.C.

The information shown hereon was taken from and is a copy of maps found in the court records pertaining to property of B. Hoover.



No. 59 6 Ac.